



# HAMILTON — SQUARE —

600 14TH STREET, NW WASHINGTON, DC 20005  
HAMILTON - SQUARE.COM

CommonWealth  
*partners*

**CBRE**

# AMENITIES

---



PENTHOUSE ROOF TERRACE  
(CAPACITY OF UP TO 440 PEOPLE)



ROOFTOP CONFERENCE  
FACILITY



FULLY RENOVATED  
LOBBY



ON-SITE DINING AND  
ENTERTAINMENT VENUES



STATE OF THE  
ART FITNESS CENTER



3 LEVELS OF BELOW  
GRADE PARKING



SECURE AND CONDITIONED  
BIKE STORAGE



# WORKPLACE REIMAGINED

With a newly renovated lobby and a suite of redesigned, luxurious amenities, Hamilton Square offers its tenants unparalleled finishes and features, respectful of the original design with forward-looking perspective.

FULLY APPOINTED ROOFTOP CONFERENCE CENTER  
ACCOMMODATING UP TO 100 PEOPLE





PENTHOUSE KITCHEN





EXPANSIVE 12,500 SF ROOFTOP TERRACE



FULLY RENOVATED LOBBY





ONSITE AMENITIES INCLUDING DINING AND ENTERTAINMENT VENUES





FULLY RENOVATED ELEVATOR LOBBY







**NEWLY DELIVERED FITNESS  
CENTER AND LOCKER ROOMS**



**GENEROUSLY SIZED SHOWERS  
AND FULL-LENGTH LOCKERS**



# THE HEART OF D.C.

---

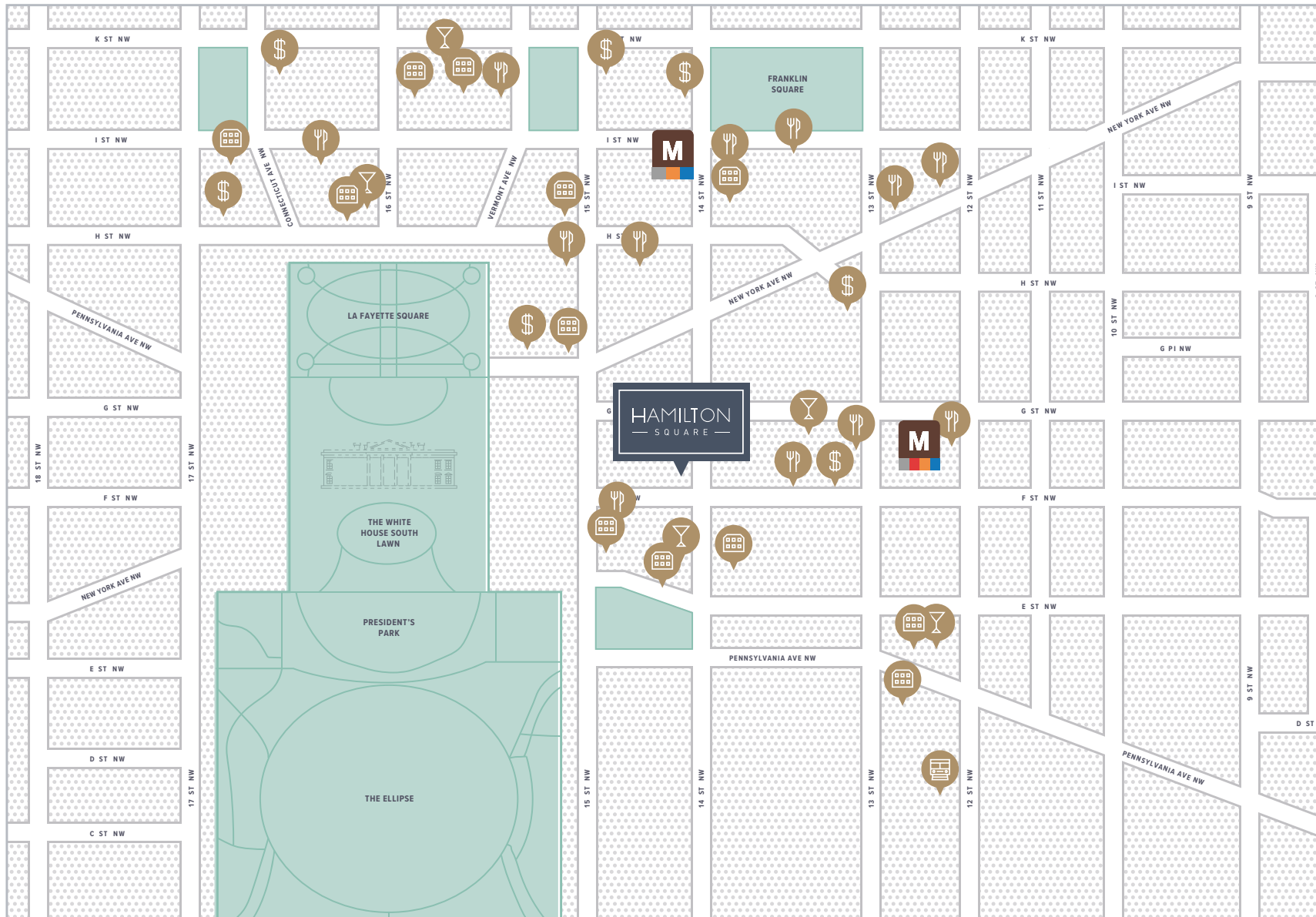
Hamilton Square enjoys views of the Washington Monument, Lincoln Memorial, Treasury Building, and National Mall. With an ideal location, historic significance, and recently completed modernized amenities and common areas, it is now one of Washington, D.C.'s finest trophy office buildings.







# ONE OF WASHINGTON, D.C.'S MOST PROMINENT ADDRESSES



 RESTAURANTS

 ENTERTAINMENT

 HOTELS

 FINANCIAL

 METRO







# TRANSPORTATION

---

Enjoy convenient access to Hamilton Square by all METRO lines, bicycle, and walking. Hamilton Square is in a class of its own as a historic trophy office building adjacent to the White House offering exceptional transportation access in the midst of the burgeoning East End amenity base.



TRANSIT SCORE

**100**



BICYCLE SCORE

**86**



WALK SCORE

**96**



# AVAILABLE FLOOR PLANS

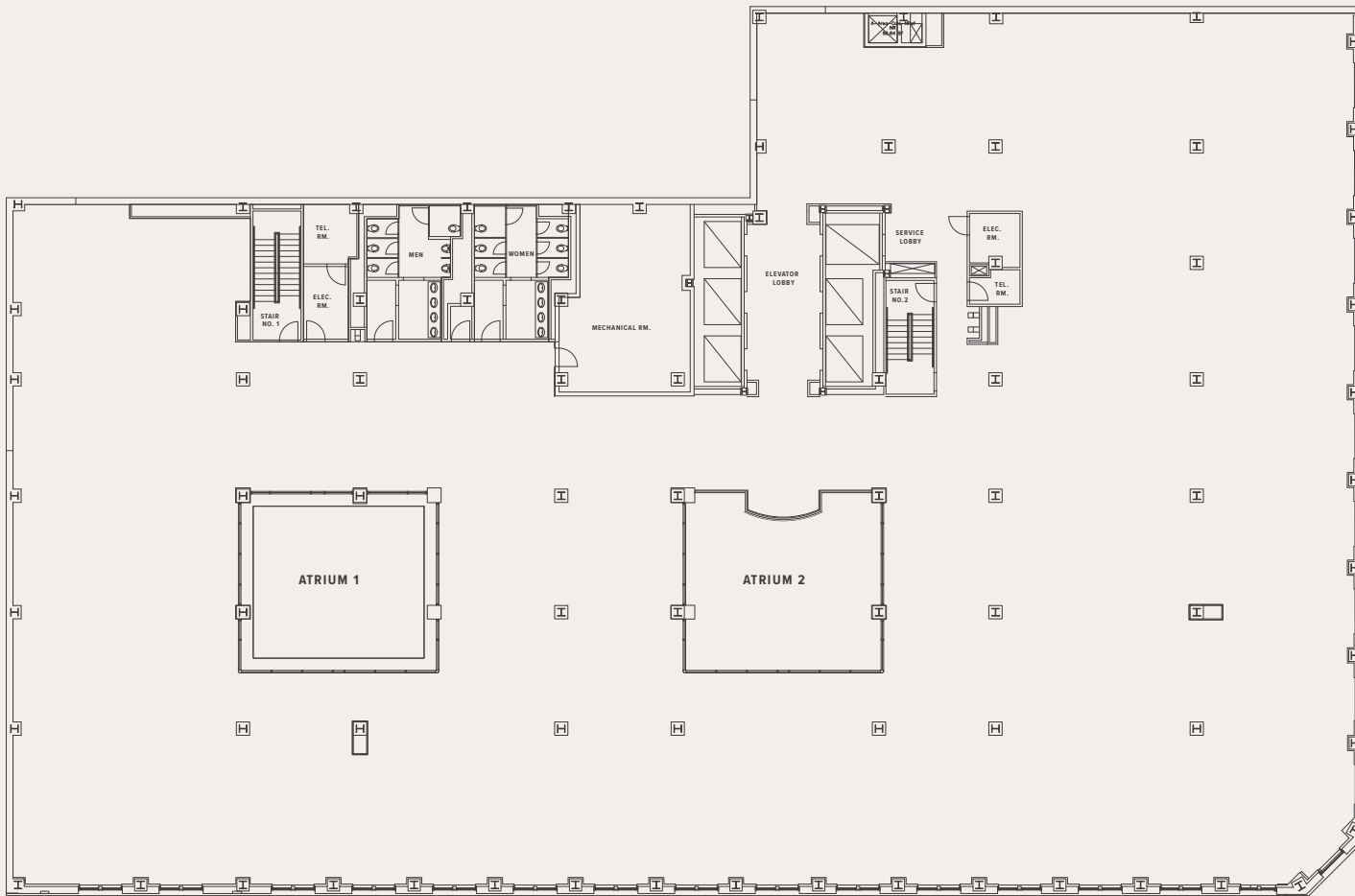
---



# FLOOR 7

# HAMILTON — SQUARE —

## CORE PLAN



**26,632 SF**

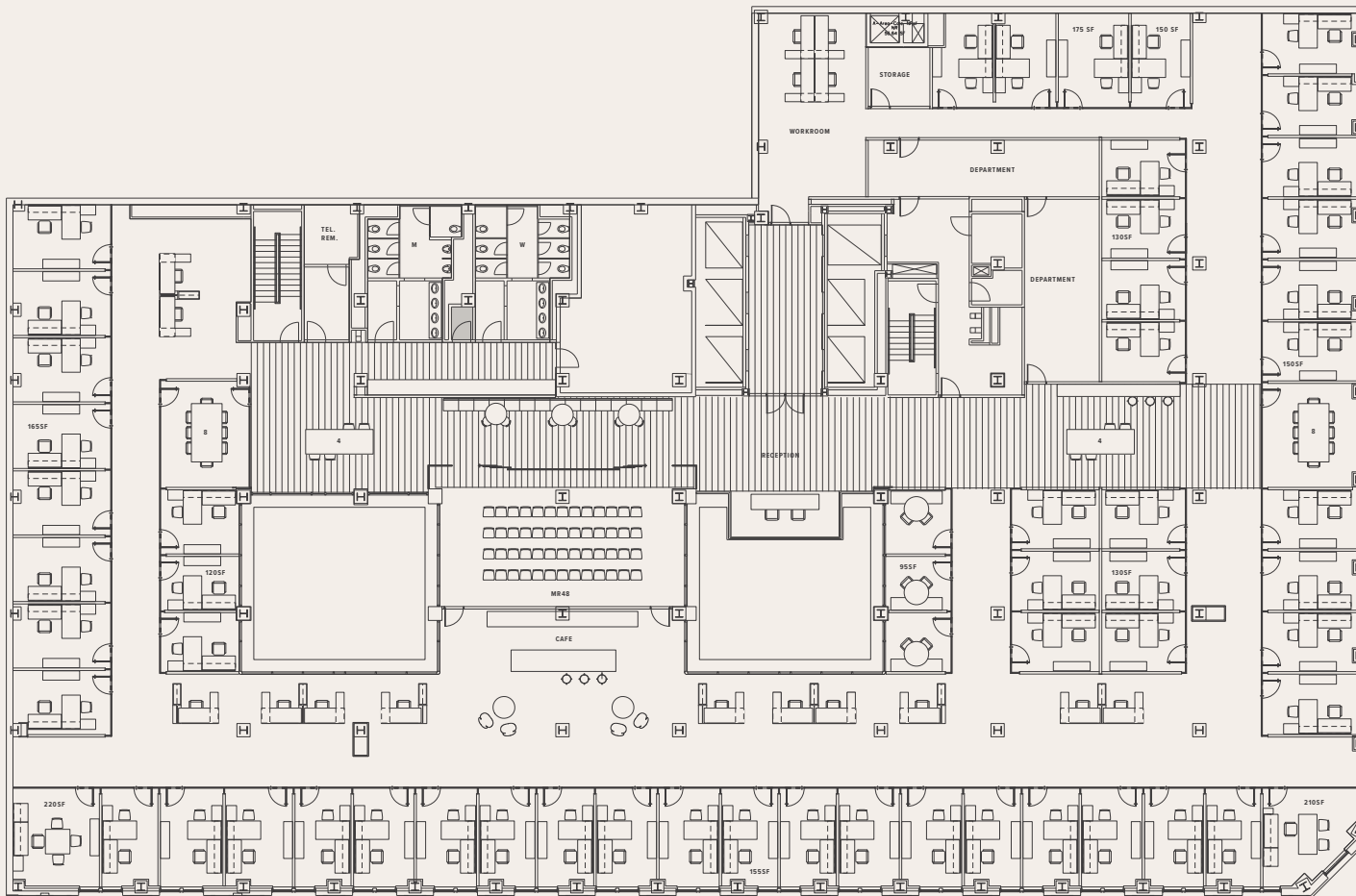
- + 9'0" / AVERAGE FINISHED CEILING HEIGHT | INTERIOR
- + 10'0" / FINISHED CEILING HEIGHT | PERIMETER
- + 13'10" / SLAB-TO-SLAB



# FLOOR 7

HAMILTON  
— SQUARE —

## CLOSED OFFICE/DENSITY PERIMETER OFFICE PLAN



**26,632 SF**

- + 9'0" / AVERAGE FINISHED CEILING HEIGHT | INTERIOR
- + 10'0" / FINISHED CEILING HEIGHT | PERIMETER
- + 13'10" / SLAB-TO-SLAB

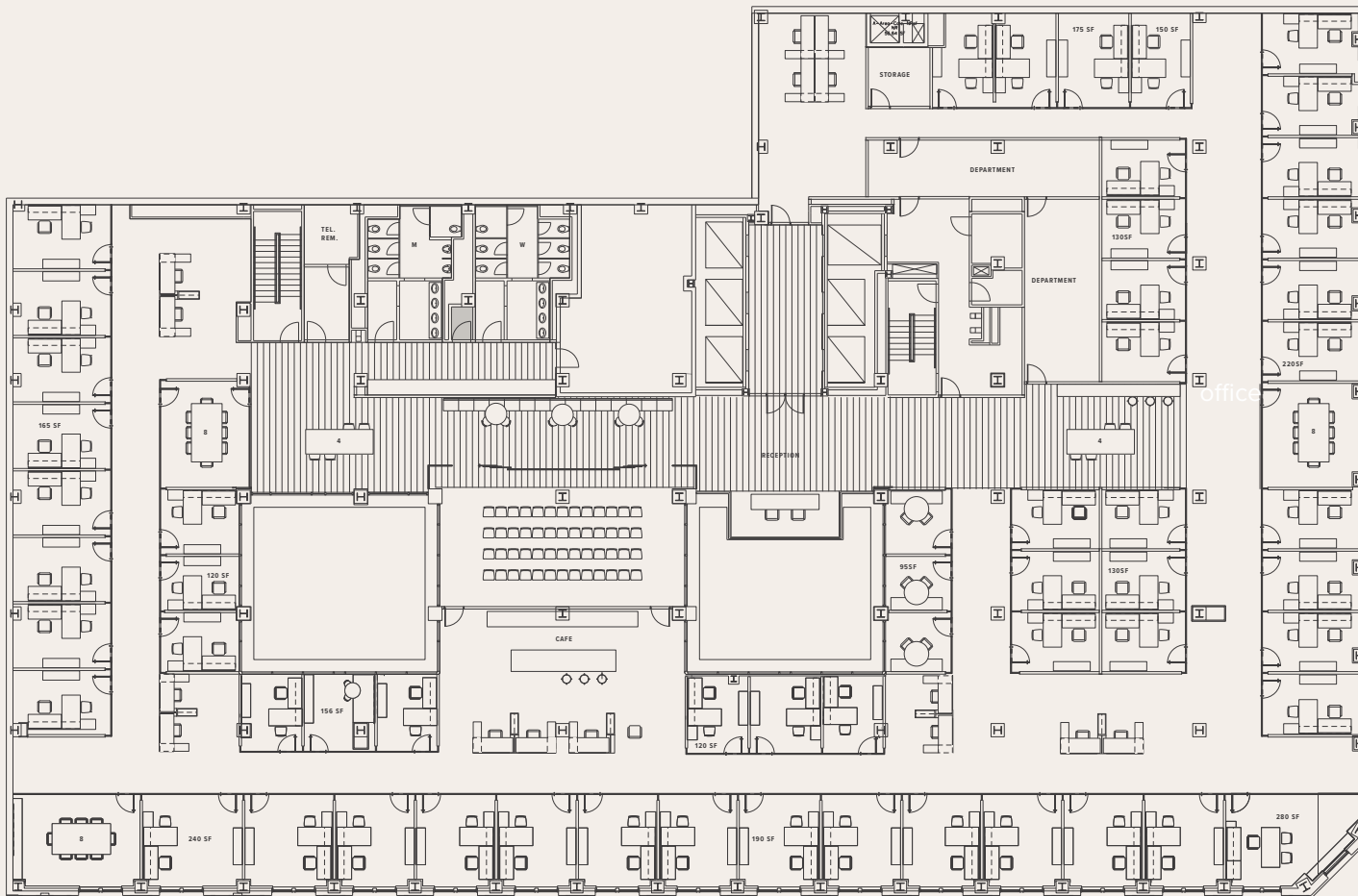
- 
- 31 PERIMETER
  - 28 INTERIOR/ATRIUM
  - 16 WORKSTATIONS
  - 59 TOTAL OFFICE
  - 1:351 OFFICE/SF
-



# FLOOR 7

# HAMILTON — SQUARE —

## CLOSED OFFICE PLAN



**26,632 SF**

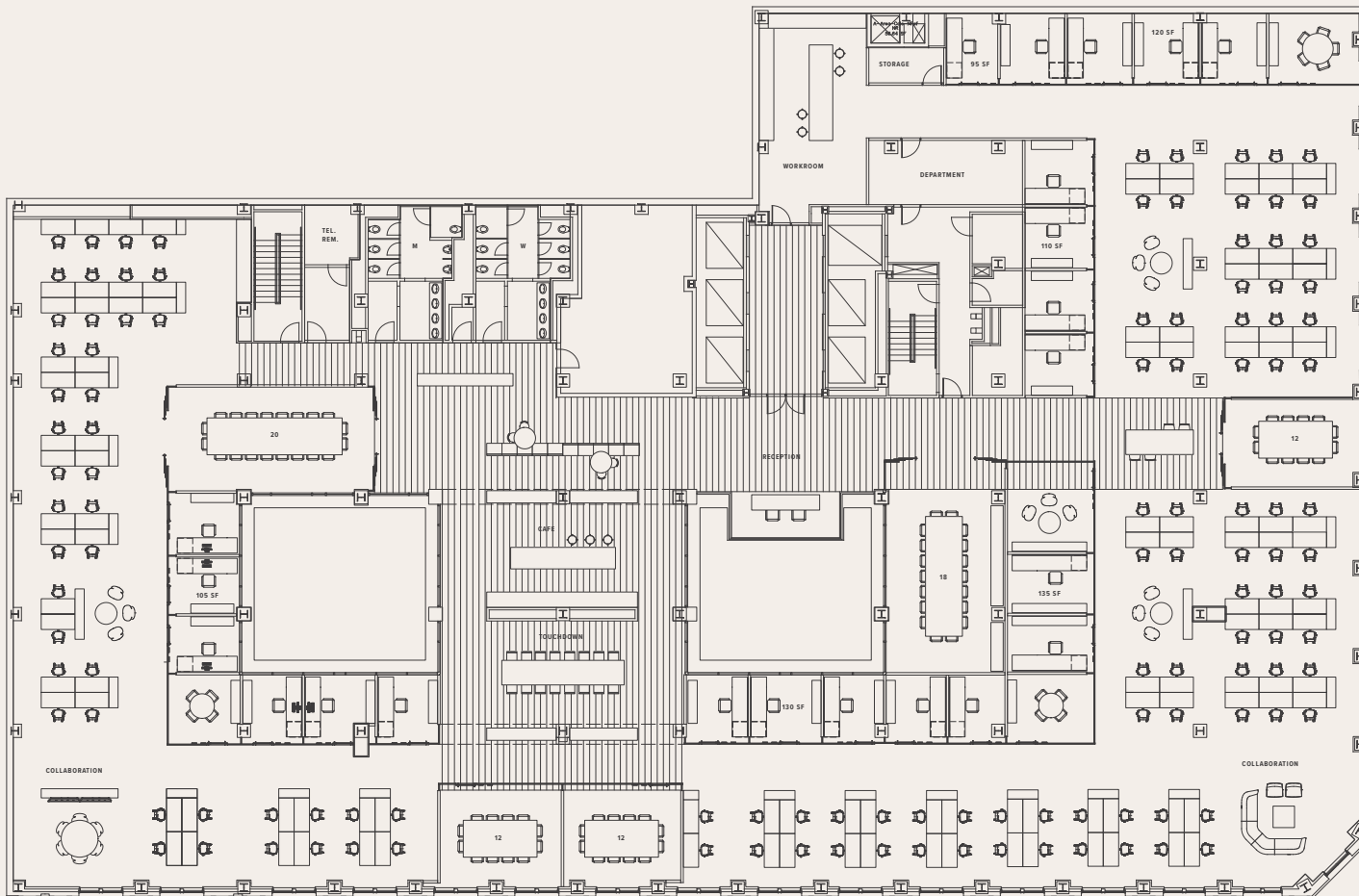
- + 9'0" / AVERAGE FINISHED CEILING HEIGHT | INTERIOR
- + 10'0" / FINISHED CEILING HEIGHT | PERIMETER
- + 13'10" / SLAB-TO-SLAB

- 
- 22 PERIMETER
  - 34 INTERIOR/ATRIUM
  - 16 WORKSTATIONS
  - 56 TOTAL OFFICE
  - 1:475 OFFICE/SF
-

# FLOOR 7

# HAMILTON — SQUARE —

## OPEN OFFICE PLAN

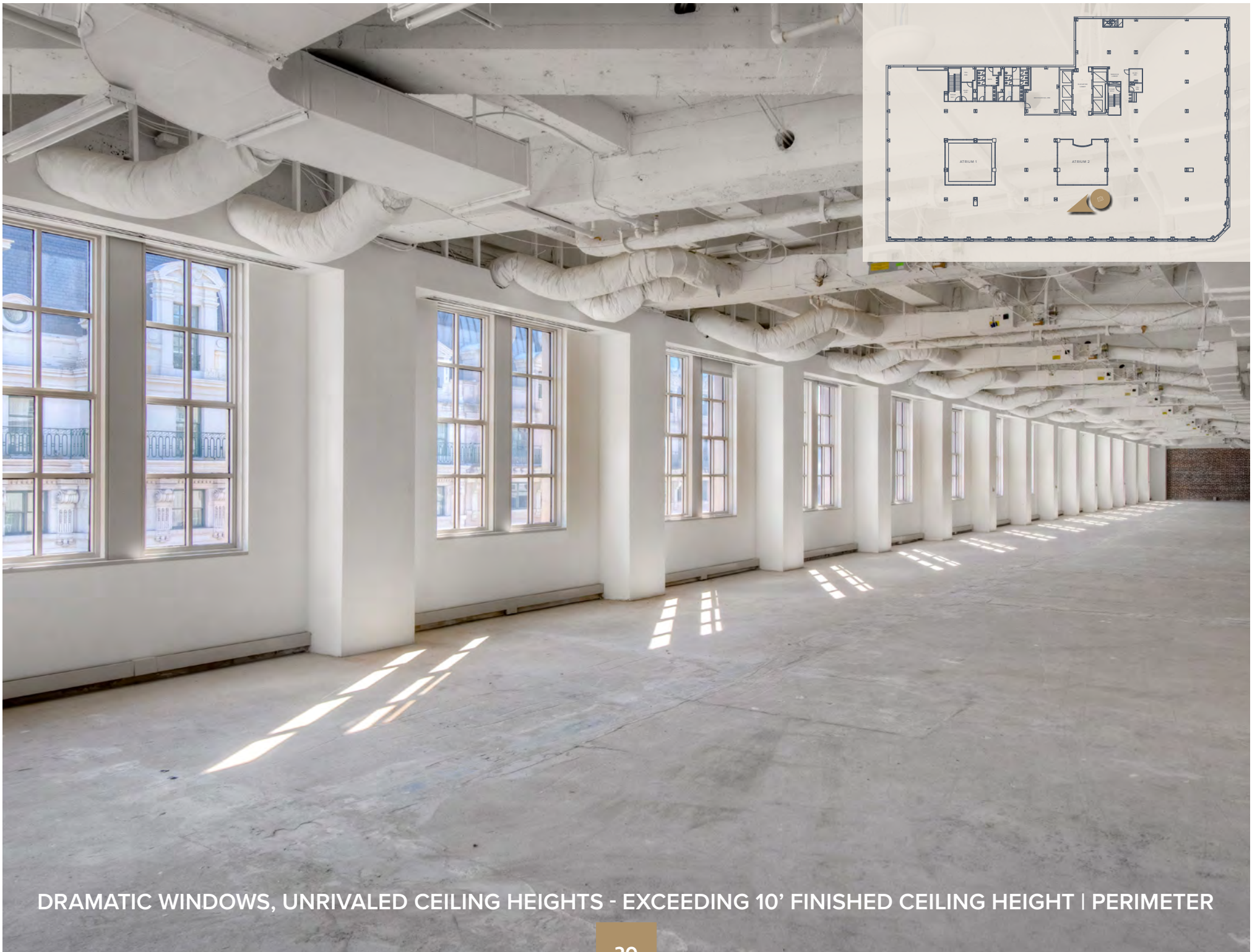


**26,632 SF**

- + 9'0" / AVERAGE FINISHED INTERIOR
- + 10'0" / FINISHED PERIMETER
- + 13'10" / SLAB-TO-SLAB

- 1 PERIMETER
- 28 INTERIOR/ATRIUM
- 116 WORKSTATIONS
- 145 TOTAL PEOPLE
- 1:183 SF/PERSON





DRAMATIC WINDOWS, UNRIVALED CEILING HEIGHTS - EXCEEDING 10' FINISHED CEILING HEIGHT | PERIMETER





ATRIUM ALLOWING FOR NATURAL LIGHT

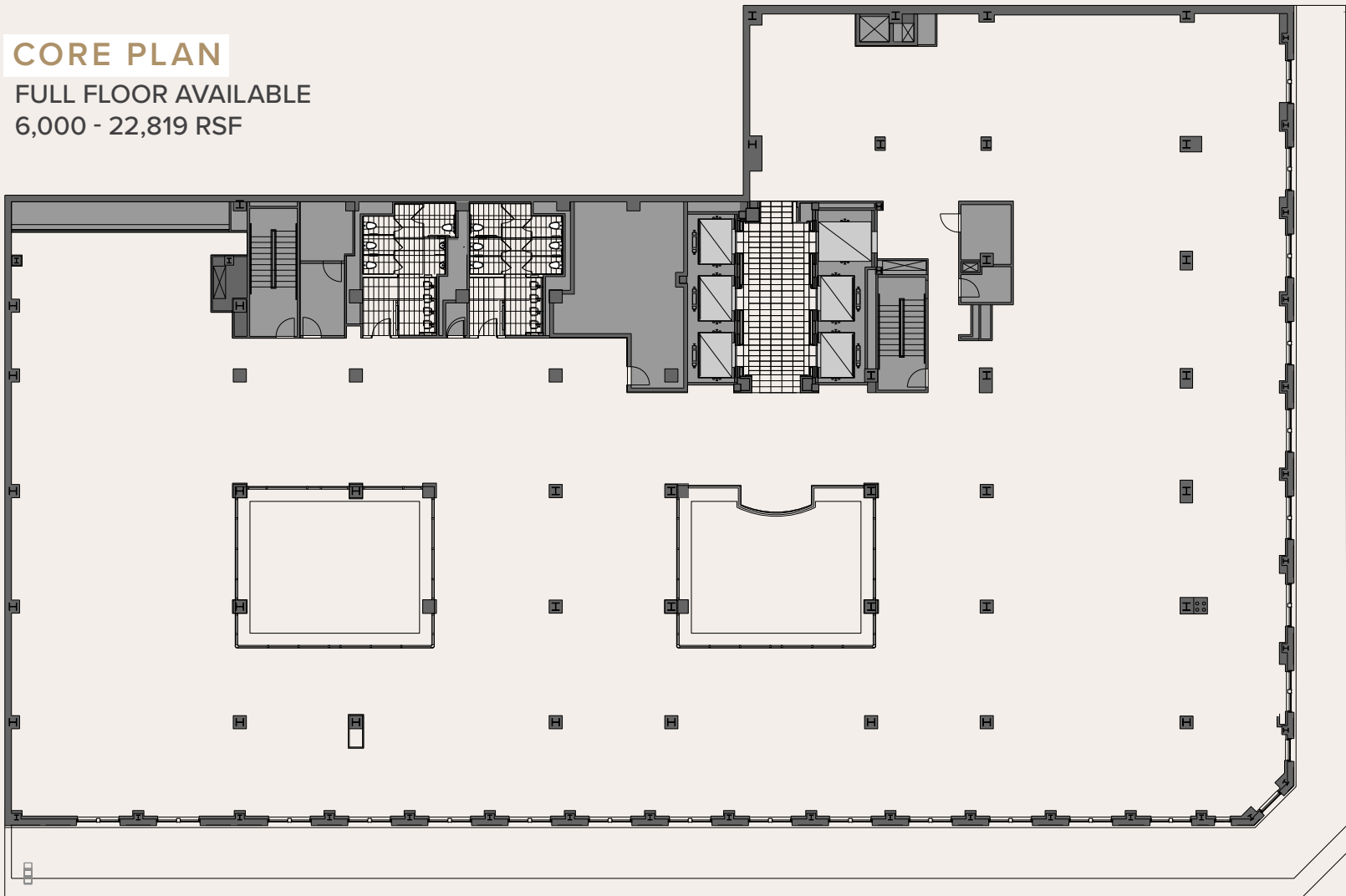




# FLOOR 9

## CORE PLAN

FULL FLOOR AVAILABLE  
6,000 - 22,819 RSF

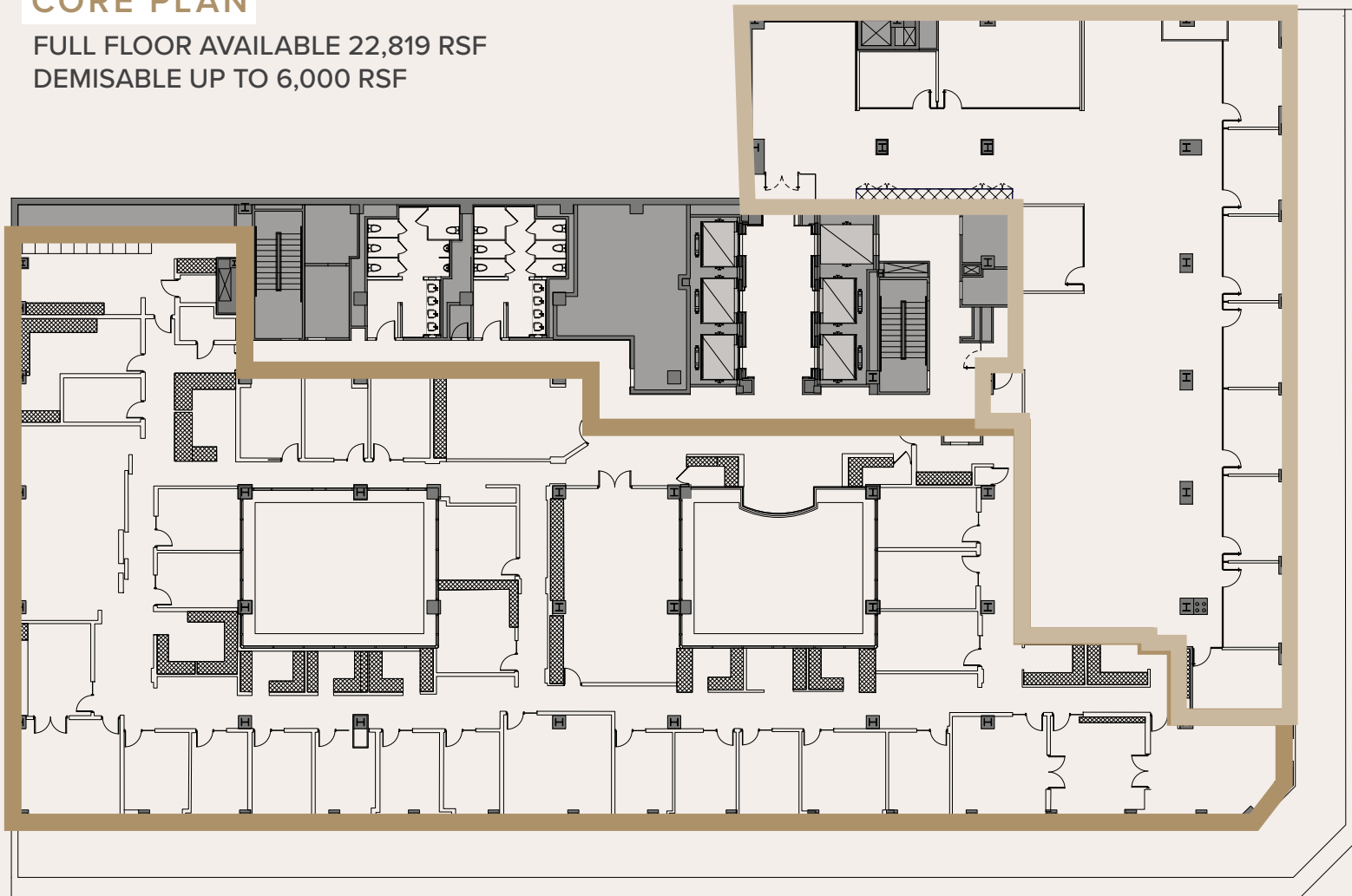




# FLOOR 9

## CORE PLAN

FULL FLOOR AVAILABLE 22,819 RSF  
DEMISABLE UP TO 6,000 RSF



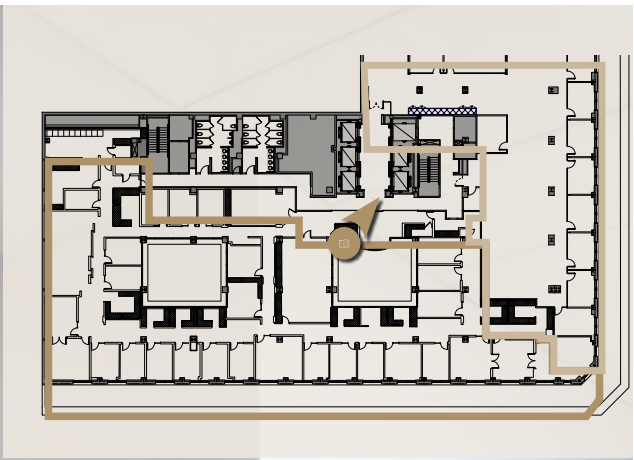
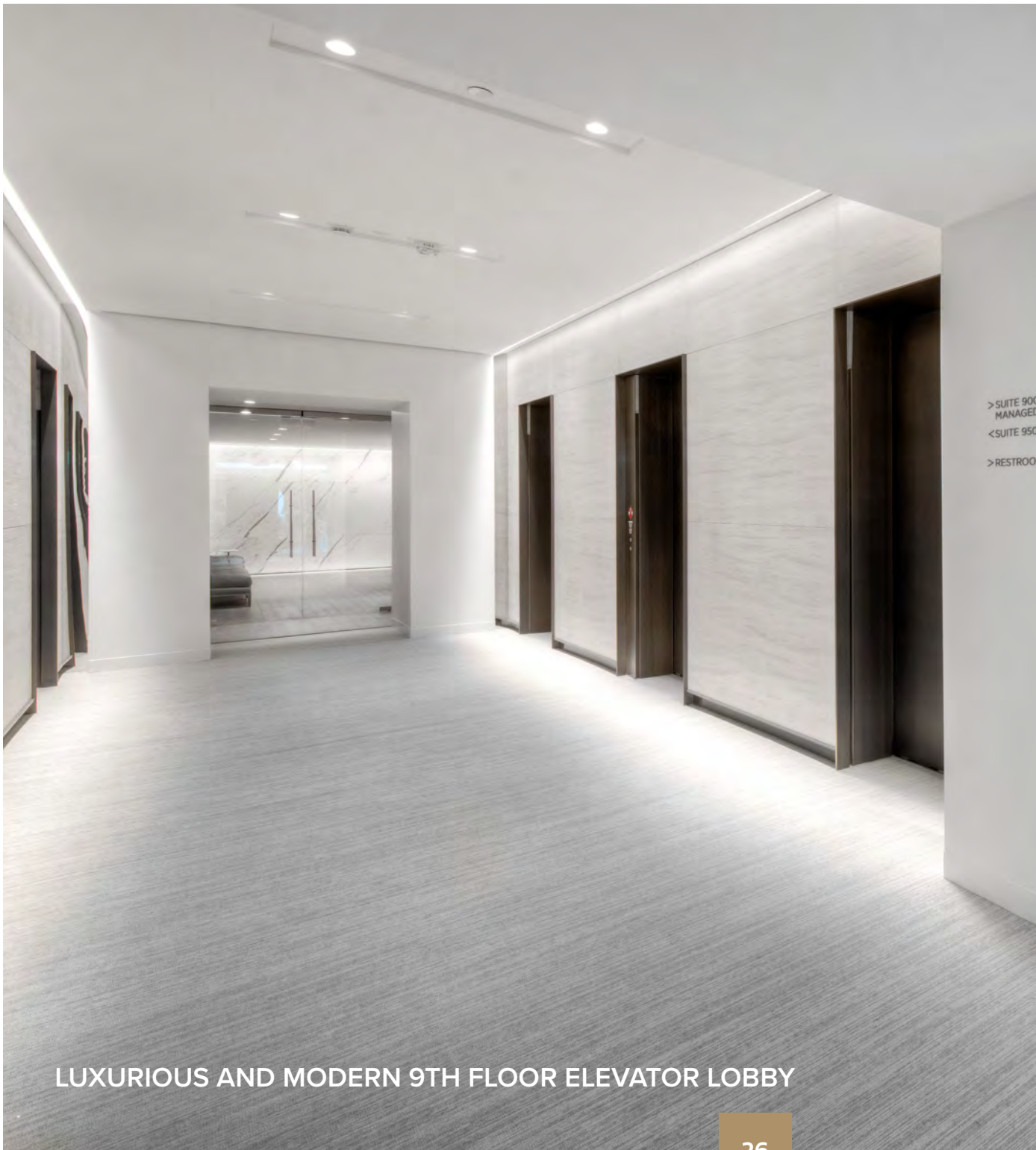
SUITE 1  
14,976 RSF

SUITE 2  
7,843 RSF



9TH FLOOR SPEC SUITE

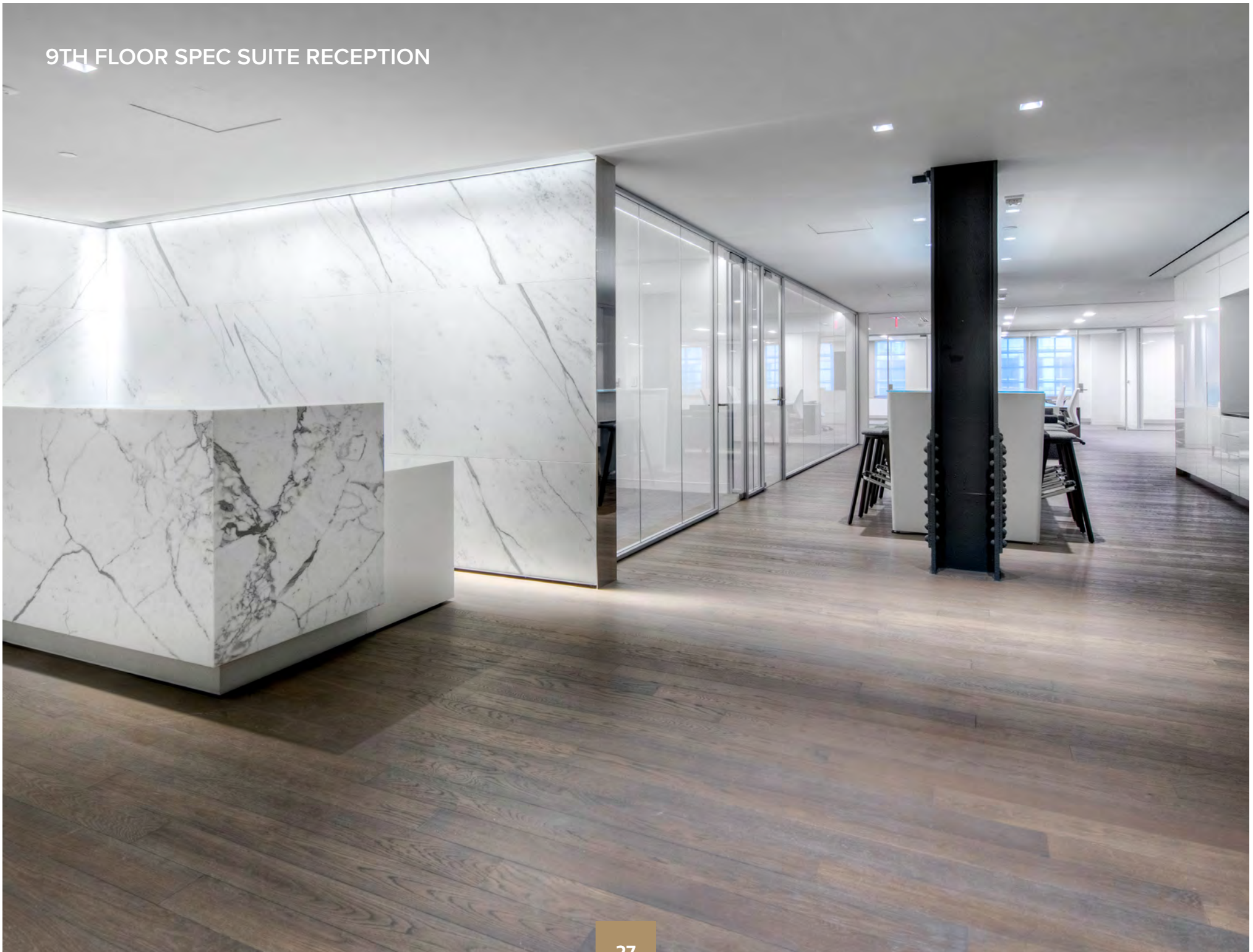




> SUITE 900  
MANAGED FUNDS ASSOCIATION  
< SUITE 950  
> RESTROOM

LUXURIOUS AND MODERN 9TH FLOOR ELEVATOR LOBBY

9TH FLOOR SPEC SUITE RECEPTION







# HISTORY AT WORK

---

Built in 1929, Hamilton Square is an art deco masterpiece originally designed by Starrett & Van Vleck Architecture of New York and inspired by the Streamline Moderne architectural style. The building was originally commissioned for Garfinckel's, a high-end department store in its heyday.

# CONTACT

---

FOR FURTHER INFORMATION, PLEASE CONTACT OUR LEASING TEAM.

**RANDY HARRELL**

+1 202 585 5556

[randy.harrell@cbre.com](mailto:randy.harrell@cbre.com)

**KEVIN HOWARD**

+1 202 585 5776

[kevin.howard@cbre.com](mailto:kevin.howard@cbre.com)

**JOE COLEMAN**

+1 202 585 5646

[joe.coleman@cbre.com](mailto:joe.coleman@cbre.com)

**LARA NEALON**

+1 202 585 5795

[lara.nealon@cbre.com](mailto:lara.nealon@cbre.com)

**KALEIGH JONES**

+1 202 585 5506

[kaleigh.jones1@cbre.com](mailto:kaleigh.jones1@cbre.com)



An aerial, high-angle photograph of a large, multi-story classical building with a prominent corner. The building has many windows and a flat roof. The surrounding area includes streets with cars, a bus lane, and some trees. The overall image is in grayscale with a dark, moody atmosphere.

# HAMILTON — SQUARE —

600 14TH STREET, NW WASHINGTON, DC 20005

[HAMILTON - SQUARE.COM](http://HAMILTON-SQUARE.COM)

CommonWealth  
*partners*

**CBRE**